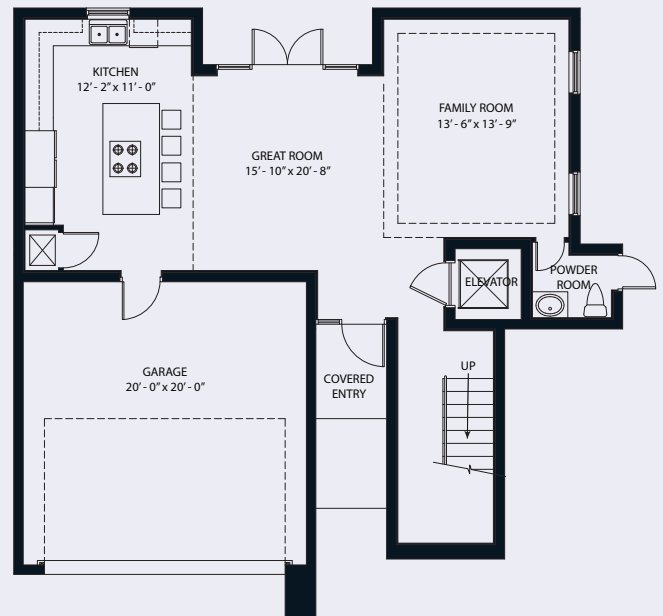
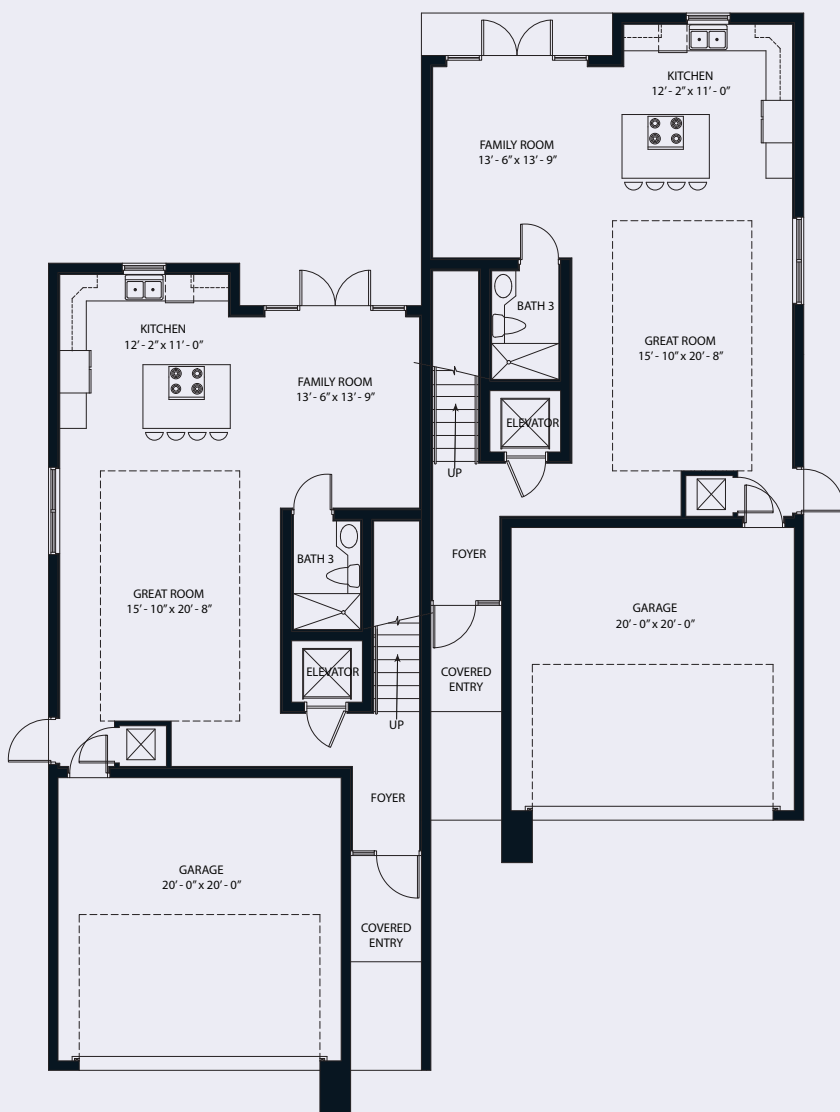




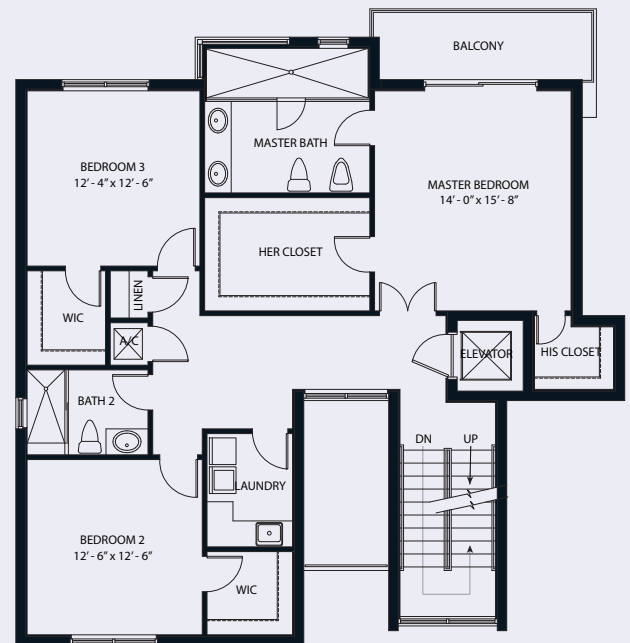
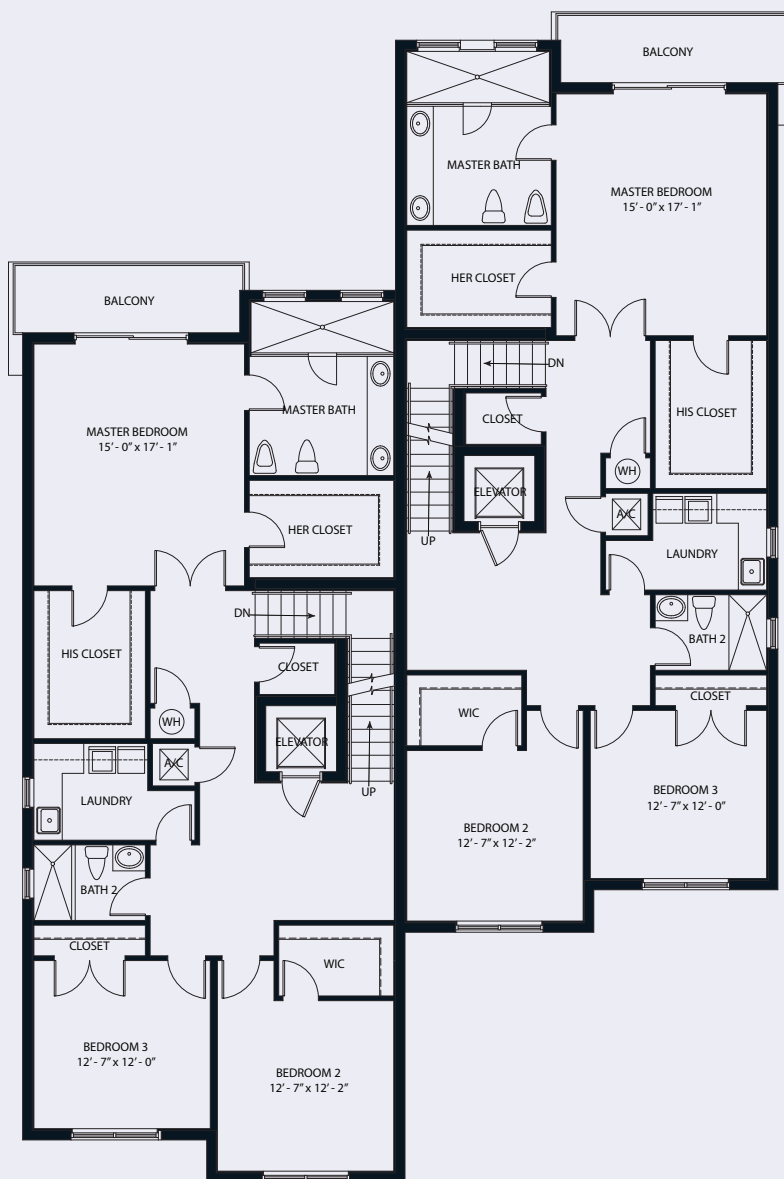
LEGACY VILLAS





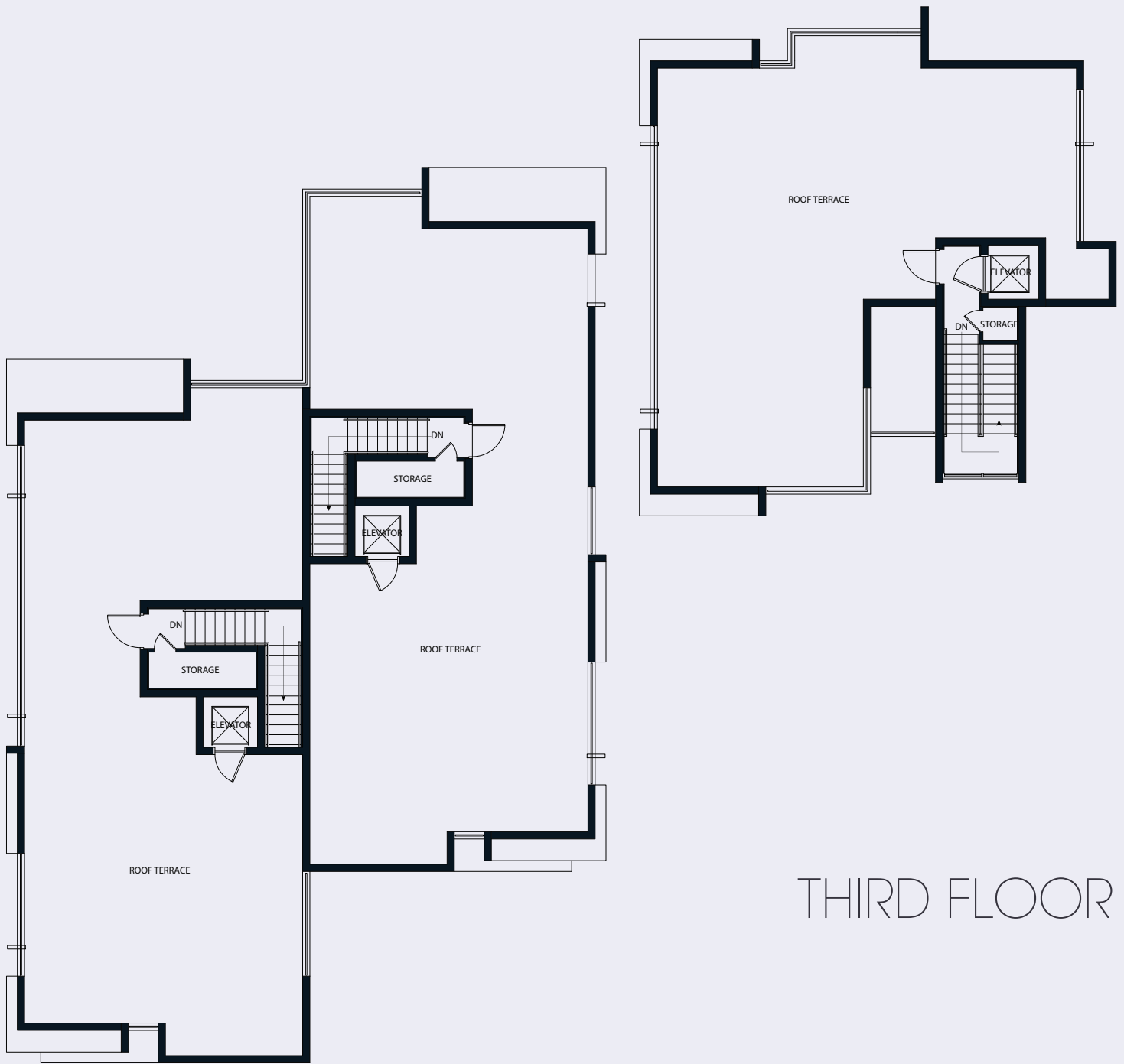
GROUND FLOOR

	UNIT A	UNIT B	UNIT C
LIVING AREA	968 SF	968 SF	940 SF
COVERED ENTRY	86 SF	86 SF	65 SF
COVERED PATIO	39 SF	39 SF	40 SF
GARAGE	417 SF	417 SF	420 SF
TOTAL	1,510 SF	1,510 SF	1,465 SF



SECOND FLOOR

	UNIT A	UNIT B	UNIT C
LIVING AREA	1,531 SF	1,531 SF	1,358 SF
BALCONY	78 SF	78 SF	76 SF
TOTAL	1,609 SF	1,609 SF	1,434 SF



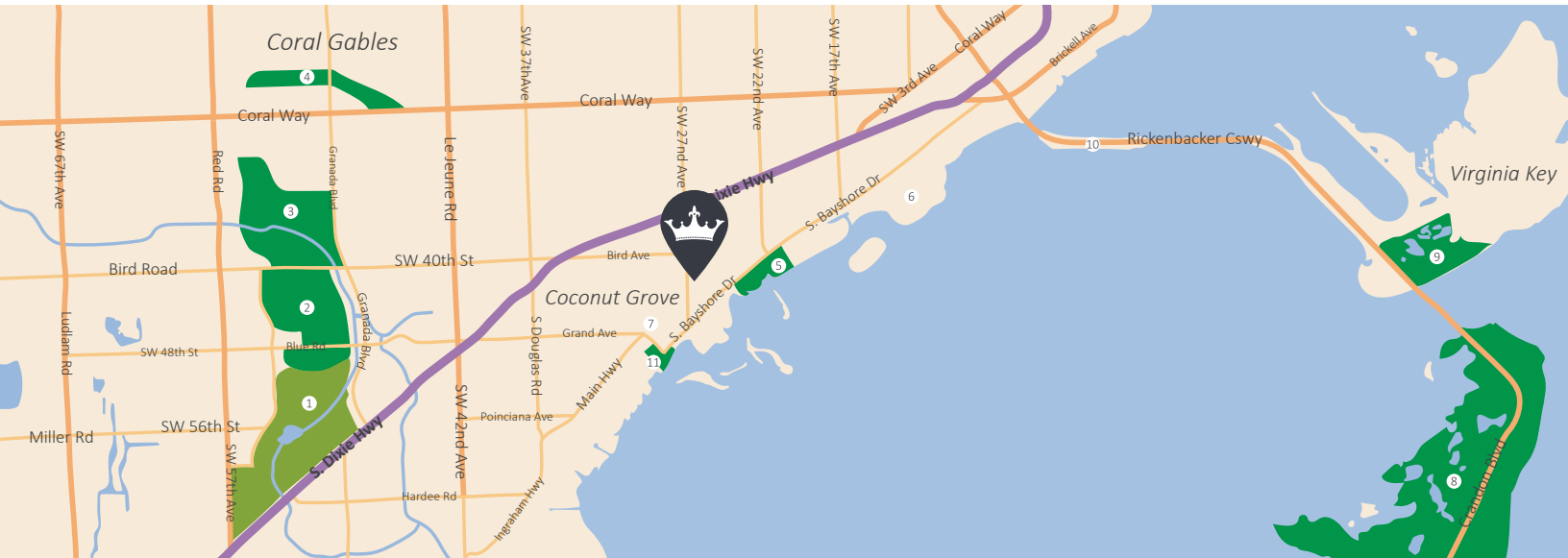
THIRD FLOOR

	UNIT A	UNIT B	UNIT C
LIVING AREA	196 SF	196 SF	197 SF
ROOF TERRACE	1,310 SF	1,310 SF	1,141 SF
TOTAL	1,506 SF	1,506 SF	1,338 SF
GRAND TOTAL	4,625 SF	4,625 SF	4,237 SF

LEGACY VILLAS

AT COCONUT GROVE

2620 Trapp Avenue



1. University of Miami
2. Riviera Country Club
3. Biltmore Golf Course

4. Granada Golf Course
5. Kennedy Park
6. Mercy Hospital

7. Coco Walk
8. Crandon Golf Key Biscayne
9. Virginia Key Beach Park

10. Hobie Island Beach Park
11. Peacock Park



T: (786) 458-1805 **W:** www.mountaincovehomes.com



PLANS, ARCHITECTURAL DRAWINGS AND ELEVATIONS ARE THE ARTIST'S CONCEPT AND MAY CONTAIN OPTIONS WHICH ARE NOT STANDARD. BUILDER RESERVES THE RIGHT TO MAKE REASONABLE MODIFICATIONS TO THE PLANS AND SPECIFICATIONS, INCLUDING BUILDING ORIENTATION ON LOT AND REVERSAL. PROVIDED DIMENSIONS AND SQUARE FOOTAGE ARE APPROXIMATE AND SHOULD NOT BE USED AS REPRESENTATION OF THE HOME'S PRECISE OR ACTUAL SIZE. ANY STATEMENT, VERBAL OR WRITTEN, REGARDING "A/C SQUARE FEET" OR "TOTAL AREA SQUARE FEET" OR ANY REPRESENTATION OF THE SQUARE FOOTAGE SIZE OF ANY HOME IS A SHORTHAND DESCRIPTION OF THE MANNER IN WHICH THE SQUARE FOOTAGE WAS ESTIMATED AND SHOULD NOT BE CONSTRUED TO INDICATE SURENESS.

